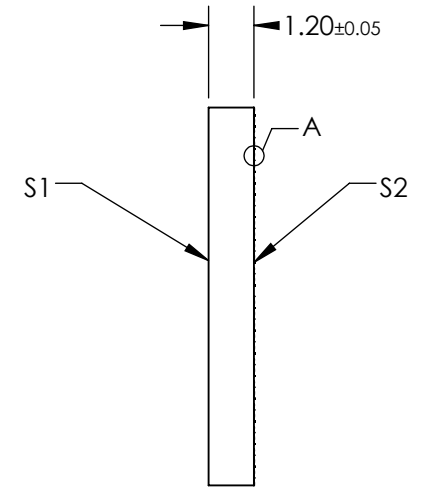
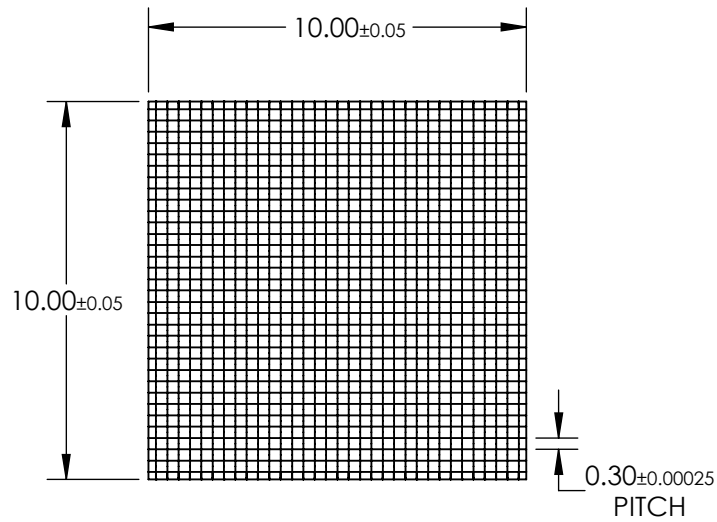
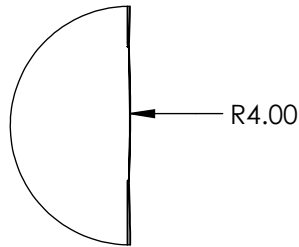


NOTES:

1. SUBSTRATE:
Fused Silica
2. COATING (APPLY ACROSS COATING APERTURE):
S1 & S2: VIS 0° (425-675nm)
R(AVG) ≤0.4% @ 425 - 675nm
3. EFFECTIVE FOCAL LENGTH: 8.7mm
4. DIVERGENCE ANGLE: ±1 °
5. WAVELENGTH RANGE (nm): 250 - 700
6. ROHS: COMPLIANT



SPECIFICATIONS SUBJECT TO CHANGE WITHOUT NOTICE
DIMENSIONS ARE FOR REFERENCE ONLY

EO® Edmund Optics®

**FOR INFORMATION ONLY:
DO NOT MANUFACTURE
PARTS TO THIS DRAWING**

THIRD ANGLE PROJECTION		TITLE	Microlens Array 10 x 10mm, 300µm Pitch, 1° Divergence, VIS 0° Coated	
ALL DIMS IN	mm	DWG NO	72242	SHEET 1 OF 1