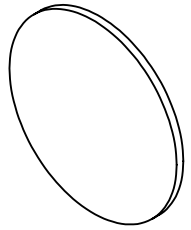


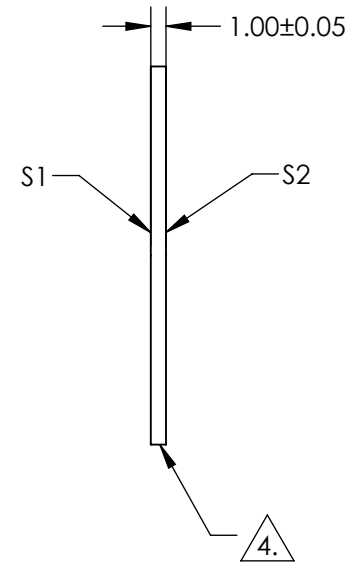
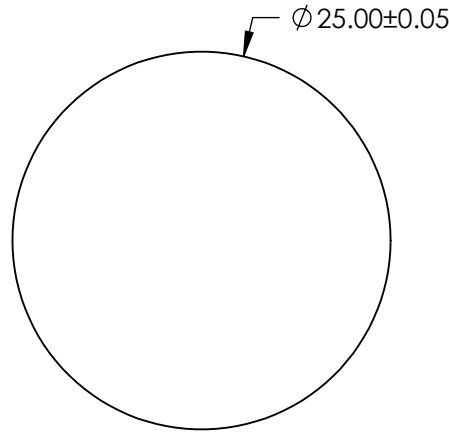
NOTES:

1. SUBSTRATE:
SAPPHIRE (AL2O3)
2. SURFACE S2 TO BE PARALLEL WITH SUFACE S1 TO WITHIN ≤ 3.5 ARMIN
3. COATING (APPLY ACROSS CLEAR APERTURE)
S1 & S2: R(AVG) $<0.5\%$ @ 350 - 700nm



4. FINE GRIND SURFACE

5. ROHS COMPLIANT



**FOR INFORMATION ONLY:
DO NOT MANUFACTURE
PARTS TO THIS DRAWING**

SPECIFICATIONS SUBJECT TO CHANGE WITHOUT NOTICE
DIMENSIONS ARE FOR REFERENCE ONLY

	S1	S2
SHAPE	PLANO	PLANO
CLEAR APERTURE	$\phi 22.50$	$\phi 22.50$
SURFACE FLATNESS	2λ	2λ
SURFACE QUALITY	80-50	80-50
BIREFRINGENCE (no-ne)	0.008	0.008
BEVEL	PROTECTED AS NEEDED	PROTECTED AS NEEDED

THIRD ANGLE PROJECTION

ALL DIMS IN

mm

 **Edmund Optics[®]**

TITLE

25mm Dia., 1mm Thick, VIS-EXT AR Coated
Sapphire Window

DWG NO

28689

SHEET
25 OF 41