

NOTES:

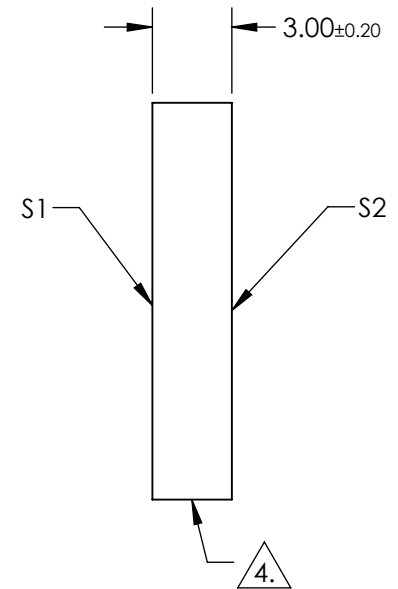
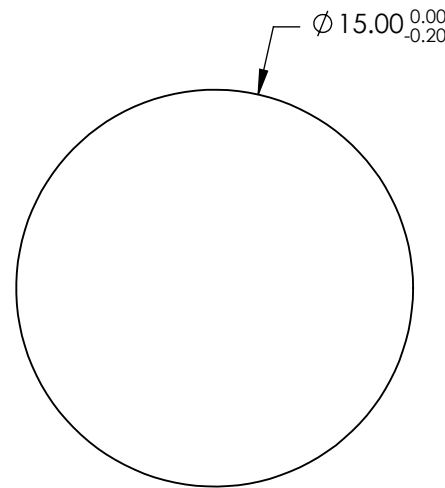
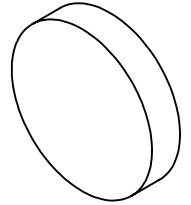
1. SUBSTRATE:
ZERODUR®
2. SURFACE S2 TO BE PARALLEL TO SURFACE S1 TO WITHIN 30 ARCSEC
3. COATING (APPLY ACROSS CLEAR APERTURE)
S1: R(abs) >99.5% @ 532 & 1064nm

DAMAGE THRESHOLD, BY DESIGN:
15 J/cm² @ 20ns @ 532nm
20 J/cm² @ 20ns @ 1064nm

S2: NONE

4. FINE GRIND SURFACE

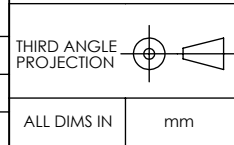
5. POWER, IRREGULARITY, AND SURFACE QUALITY SPECIFICATIONS APPLY ACROSS CLEAR APERTURE
6. CLEAR APERTURE AND COATING APERTURE ARE CENTERED ON SURFACES



**FOR INFORMATION ONLY:
DO NOT MANUFACTURE
PARTS TO THIS DRAWING**

SPECIFICATIONS SUBJECT TO CHANGE WITHOUT NOTICE
DIMENSIONS ARE FOR REFERENCE ONLY

	S1	S2
SHAPE	PLANO	PLANO
SURFACE QUALITY	20 - 10	COMMERCIAL POLISH
SURFACE FLATNESS	λ/10	N/A
CLEAR APERTURE	Ø 13.500	N/A
COATING APERTURE	Ø 13.500	N/A
BEVEL	PROTECTED AS NEEDED	PROTECTED AS NEEDED



TITLE	15.0mm Dia x 3mm 532/1064nm, Zerodur Dual Band Laser Mirror
DWG NO	29057
SHEET 76 OF 86	