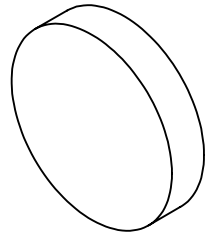


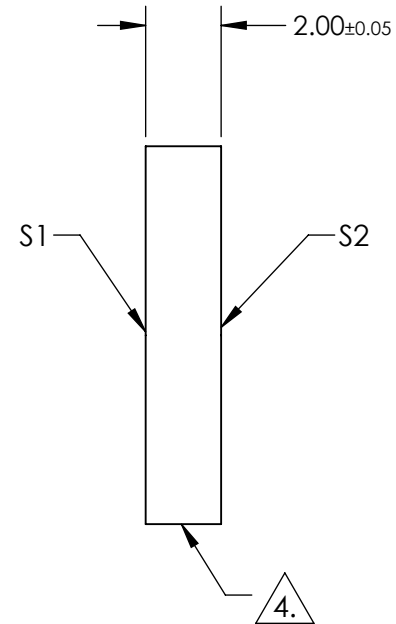
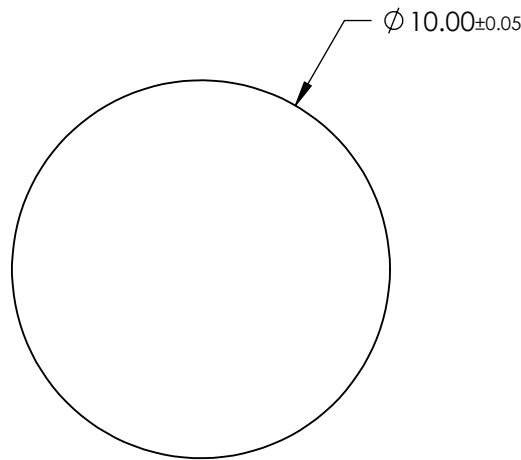
NOTES:

1. SUBSTRATE:
SAPPHIRE (AL2O3)
2. SURFACE S2 TO BE PARALLEL WITH SUFACE S1 TO WITHIN ≤ 3.5 ARMIN
3. COATING (APPLY ACROSS CLEAR APERTURE)
S1 & S2: R(AVG) $\leq 1.75\%$ @ 400 - 700nm



4. FINE GRIND SURFACE

5. ROHS COMPLIANT



**FOR INFORMATION ONLY:
DO NOT MANUFACTURE
PARTS TO THIS DRAWING**

SPECIFICATIONS SUBJECT TO CHANGE WITHOUT NOTICE
DIMENSIONS ARE FOR REFERENCE ONLY

	S1	S2
SHAPE	PLANO	PLANO
CLEAR APERTURE	$\varnothing 9.00$	$\varnothing 9.00$
SURFACE FLATNESS	2λ	2λ
SURFACE QUALITY	80-50	80-50
BIREFRINGENCE (no-ne)	0.008	0.008
BEVEL	PROTECTED AS NEEDED	PROTECTED AS NEEDED

THIRD ANGLE PROJECTION

ALL DIMS IN

mm

Edmund Optics®

TITLE

10mm Dia., 2mm Thick, MgF2 AR Coated
Sapphire Window

DWG NO

25388

SHEET
13 OF 70