

NOTES:
1. SUBSTRATE:
WP560

2. COATING (APPLY ACROSS COATING APERTURE)
TRANSMISSION: >89 %

3. RETARDANCE: 1λ

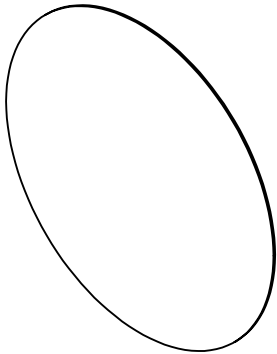
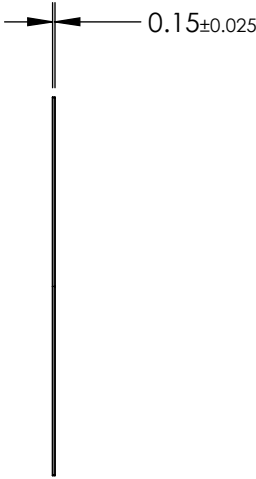
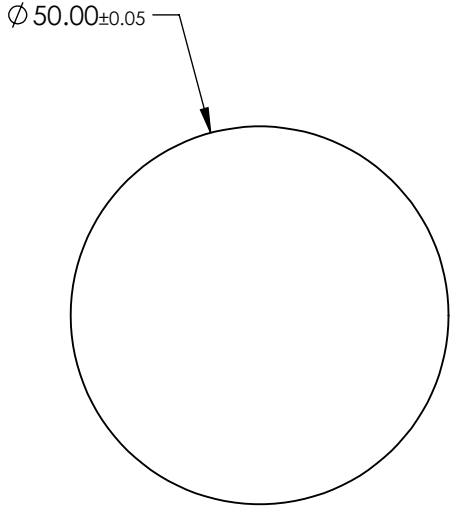
4. PHASE SHIFT: 360.00 °

5. HAZE: 1%

6. DESIGN WAVELENGTH: 560 nm

7. CONTRUCTION: POLARIZING FILM

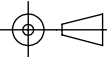
8. ROHS: COMPLIANT



SPECIFICATIONS SUBJECT TO CHANGE WITHOUT NOTICE
DIMENSIONS ARE FOR REFERENCE ONLY

**FOR INFORMATION ONLY:
DO NOT MANUFACTURE
PARTS TO THIS DRAWING**

EO[®] Edmund Optics[®]

THIRD ANGLE PROJECTION 		TITLE	50mm Dia., 1λ Retarder Film	
ALL DIMS IN	mm	DWG NO	25374	SHEET 6 OF 6