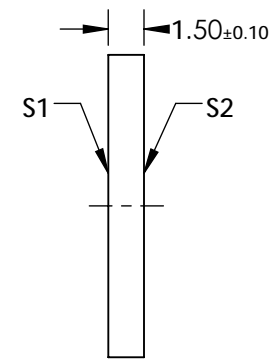
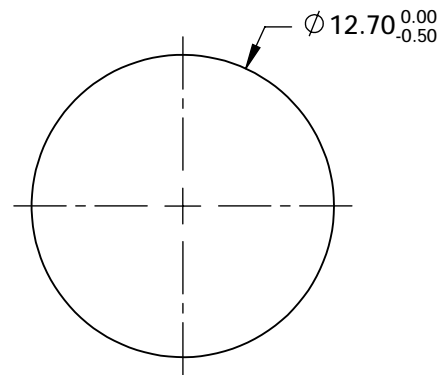
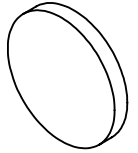


NOTES:

1. SUBSTRATE MATERIAL:
FUSED SILICA
2. SURFACE S1 TO BE PARALLEL TO SURFACE S2 TO WITHIN <3 ARCMIN
3. COATING (APPLY ACROSS COATING APERTURE)
S1: Square Aluminum (AlMgF2) Apertures
R: 80±5% @ 250 - 2000nm @ 45° AOI
T: 20±5% @ 250 - 2000nm @ 45° AOI
S2: NONE
4. POLKA DOT CENTER TO CENTER SPACING : 0.15mm
POLKA DOT MINIMUM APERTURE: 2mm
5. ROHS : COMPLIANT

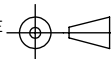


**FOR INFORMATION ONLY:
DO NOT MANUFACTURE
PARTS TO THIS DRAWING**

SPECIFICATIONS SUBJECT TO CHANGE WITHOUT NOTICE
DIMENSIONS ARE FOR REFERENCE ONLY

	S1	S2
SHAPE	PLANO	PLANO
SURFACE QUALITY	80-50	80-50
CLEAR APERTURE	Ø 11.43	Ø 11.43
BEVEL	PROTECTIVE AS NEEDED	PROTECTIVE AS NEEDED

THIRD ANGLE
PROJECTION



ALL DIMS IN

mm



Edmund Optics®

TITLE

12.7mm Dia 80R/20T, UV-NIR Polka-Dot
Beamsplitter

DWG NO

18714

SHEET
1 OF 1