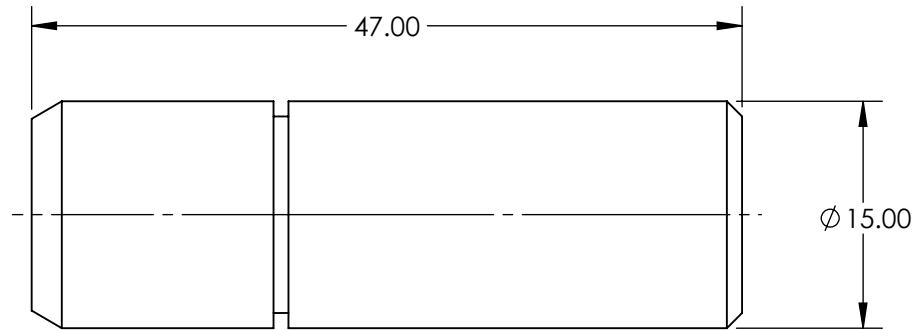


NOTES:
 1. RoHS: COMPLIANT

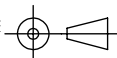


**FOR INFORMATION ONLY:
 DO NOT MANUFACTURE
 PARTS TO THIS DRAWING**

SPECIFICATIONS SUBJECT TO CHANGE WITHOUT NOTICE
 DIMENSIONS ARE FOR REFERENCE ONLY

DESIGN WAVELENGTH (nm)	655
OUTPUT POWER (mW)	4.5
BEAM DIAMETER (mm)	2
FOCUS RANGE	20mm - ∞
COLOR	RED
LASER CLASS - CDRH	IIIa
MEAN TIME TO FAILURE @ 25° (HOURS)	>100,000
POINTING ACCURACY (mrad)	≤5
POWER REQUIREMENT	5V DC ±5%
TYPE	DIODE
WAVELENGTH STABILITY (nm/°C)	0.25

EO® Edmund Optics®

THIRD ANGLE PROJECTION 	TITLE	4.5mW 655nm Circular, Premier Laser Diode	
ALL DIMS IN	mm	DWG NO	57108
			SHEET 1 OF 1