

NOTES:

1. SUBSTRATE MATERIAL:
N-BK7

2. COATING (APPLY ACROSS CLEAR APERTURE)

S1 & S2: VIS-NIR

R(abs) ≤0.25% @ 880nm

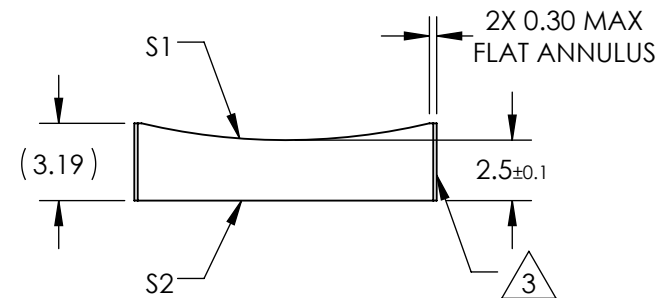
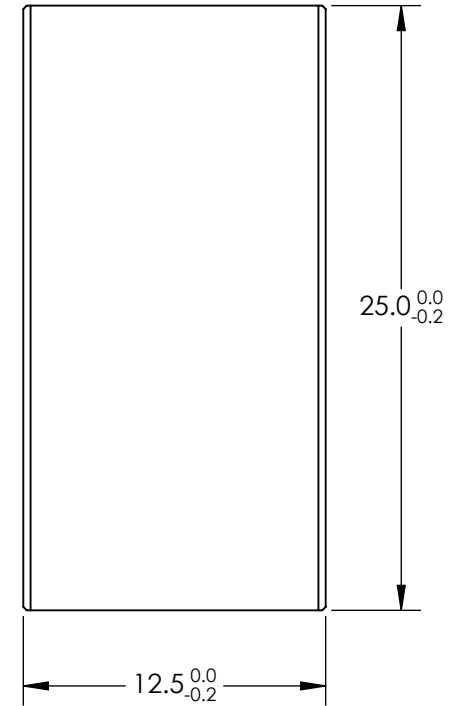
R(avg) ≤1.25% @ 400 - 870nm

R(avg) ≤1.25% @ 890 - 1000nm

3. FINE GROUND SURFACE


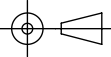
4. POWER, IRREGULARITY, AND SURFACE QUALITY SPECIFICATIONS APPLY ACROSS CLEAR APERTURE

5. RoHS COMPLIANT



**FOR INFORMATION ONLY:
DO NOT MANUFACTURE
PARTS TO THIS DRAWING**

SPECIFICATIONS SUBJECT TO CHANGE WITHOUT NOTICE
DIMENSIONS ARE FOR REFERENCE ONLY

REV. A	S1	S2	EFL	-50	 Edmund Optics®	
SHAPE	CONVEX	PLANO	BFL	-51.65		
RADIUS	25.84	∞			TITLE	12.5mm H X 25mm L X -50mm FL VIS-NIR COATED, CYLINDER LENS
SURFACE QUALITY	60-40	60-40			DWG NO	69839
CLEAR APERTURE	11.50 X 24.00	11.50 X 24.00	ALL DIMS IN	mm		
COATING APERTURE	11.50 X 24.00	11.50 X 24.00				
BEVEL	PROTECTED AS NEEDED	PROTECTED AS NEEDED				