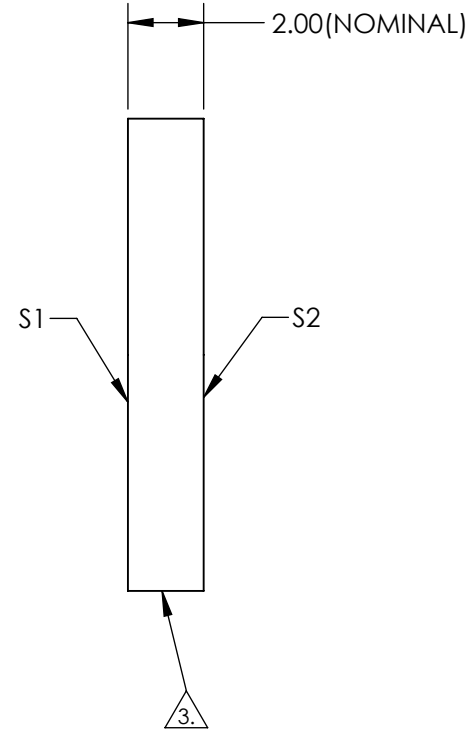
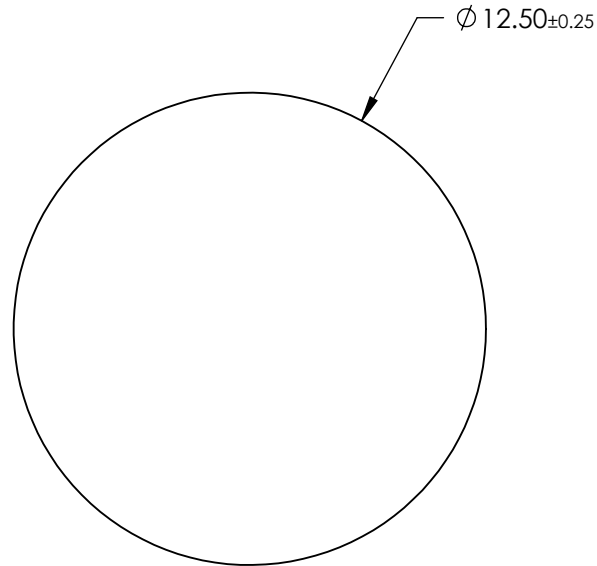


NOTES:

1. SUBSTRATE: Float Glass
2. COATING (APPLY ACROSS CLEAR APERTURE)
  - S1: Protected Gold (700-10000nm)
    - R(AVG) >96% @ 700 - 2000nm
    - R(AVG) >96% @ 2000 - 10,000nm
  - S2: NONE

3. EDGES GROUND

4. ROHS COMPLIANT



**FOR INFORMATION ONLY:  
DO NOT MANUFACTURE  
PARTS TO THIS DRAWING**

SPECIFICATIONS SUBJECT TO CHANGE WITHOUT NOTICE  
DIMENSIONS ARE FOR REFERENCE ONLY

	S1	S2
SHAPE	PLANO	PLANO
SURFACE QUALITY	60-40	N/A
SURFACE FLATNESS	4 - 6λ	N/A
CLEAR APERTURE	Ø 11.50	N/A
BEVEL	PROTECTED AS NEEDED	PROTECTED AS NEEDED



ALL DIMS IN

mm

**EO**® Edmund Optics®

TITLE

12.5mm Dia Protected Gold, 4-6λ Mirror

DWG NO

43730

SHEET  
1 OF 1